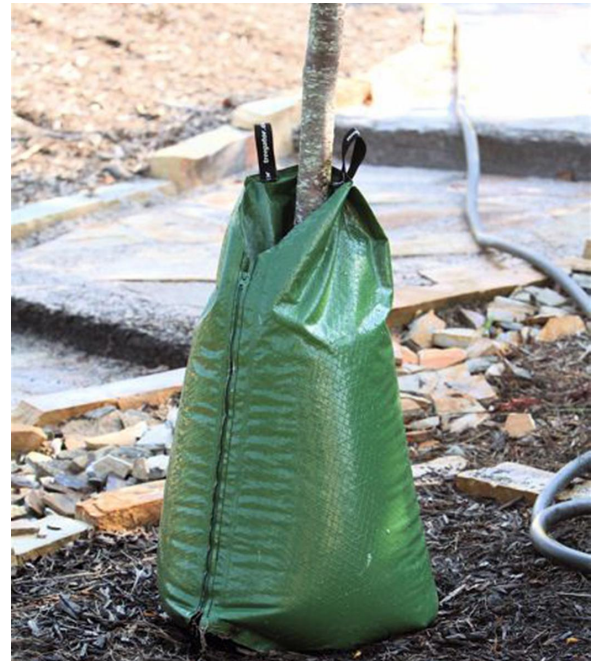




Tree Planting Aftercare

Proper watering is the key to tree survival!

- Trees need to be watered **April-October**, whenever soaking rains are not regularly occurring
- Most trees need to be watered for **two years** after planting with occasional watering afterwards during periods of extended drought.
- **Watering bags** are our preferred irrigation method as they are easy to use and do a great job deeply soaking the tree's root zone.
- Watering bags should be filled **once a week**
- Watering frequency may be increased to twice a week during the height of the **summer heat** or if the tree is showing signs of drought stress
- Overwatering can also harm or kill trees, do not fill bags more than twice a week
- You will need to arrange for the bags to be filled if you plan to be away for more than a week during the watering period.



Where to get watering bags:

Watering bags for shorter trees and shrubs with low branches or multiple stems:

<https://www.amleo.com/leonard-arborrain-tower-tree-and-plant-hydrator/p/ART20>

Trees with a single trunk and no branches for the first 2':

<https://www.amleo.com/leonard-arborrain-tm-hydration-system-20-gallon/p/AR20>

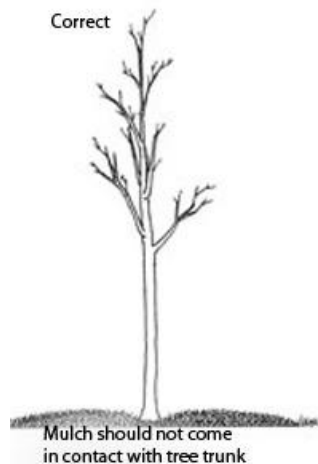
These bags are also available from many local nurseries, other landscape suppliers. There are many different brand names which all do the same thing.



Stakes: Stakes should be removed after one full year. Give the tree a moderate wiggle after you remove the stakes. The trunk should flex. If you see the ground moving significantly there may be issues with anchorage. Please give us a call, we will check it out.

Mulch: You should strive to maintain a 2-3" deep layer of mulch under the tree's branches. This mulch should be maintained for the entire life of the tree, the area will expand as the tree grows.

- The mulch you use should be organic, ideally a mix of partially composted bark, branches, and leaves. Arborist chips are the best option.
- **We place mulch when we plant the tree so additional mulch should not be needed for the first year or two.**
- Mulch will benefit all of your trees, not just the new ones!



More info about wood chip sourcing:

[Arborist Chips Sourcing](#)

If you have any questions about your newly planted tree please don't hesitate to ask. Also if anything ever seems a little off with your tree let us know so we can come check it out.

The Conservation Tree Care Team